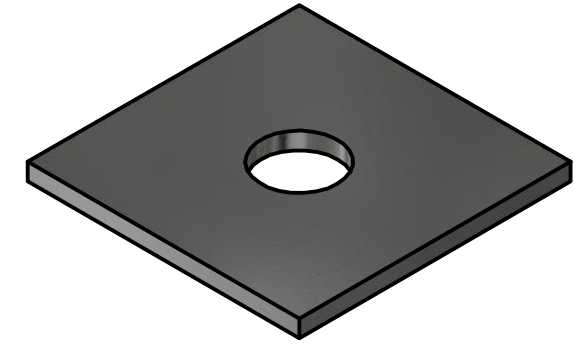
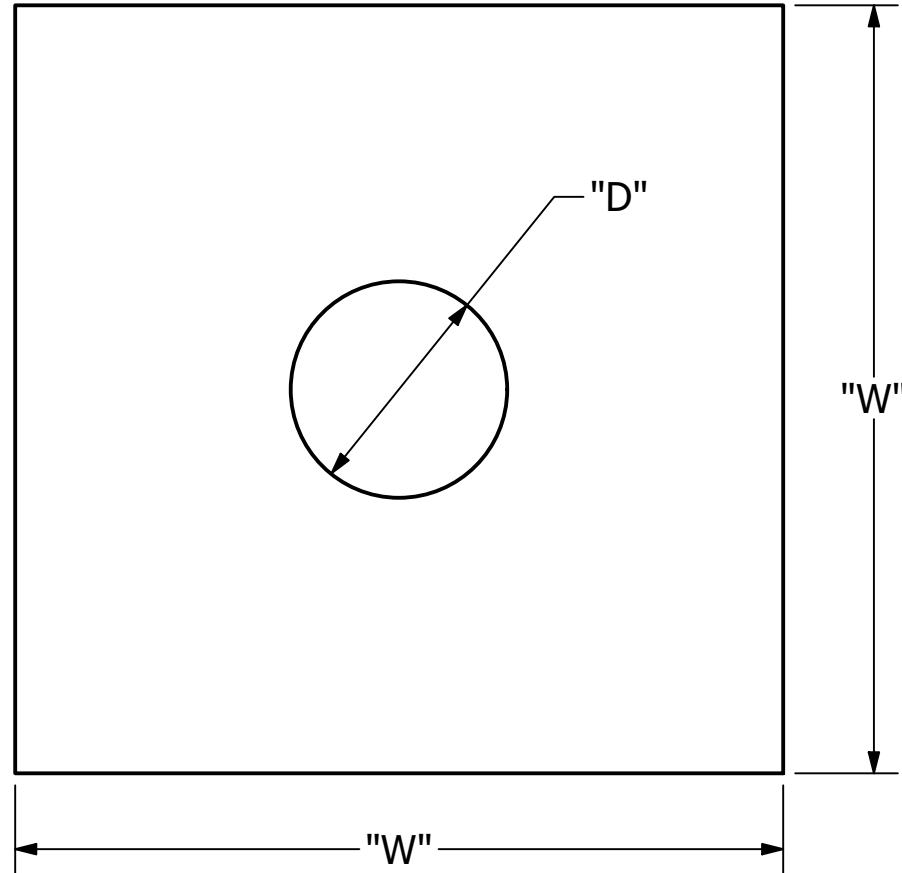
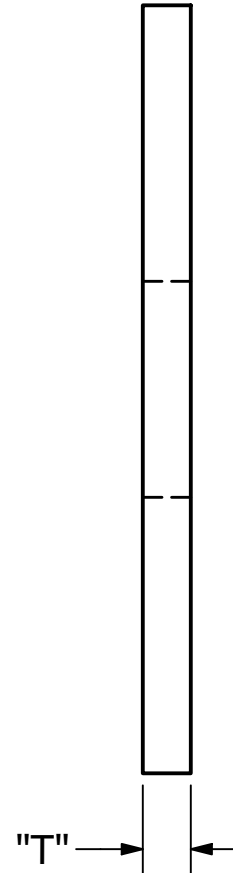


-NOTES-

- MATERIAL: STEEL, HOT DIP GALV. PER ASTM A153.
OR MECHANICAL GALV. PER ASTM B695.



CAT NO.	"D"	"T"	"W"
6811	.56	.13	2
6812	.69	.13	2
6813	.69	.19	2.25
6814	.81	.19	2.25
6816	.81	.19	3
6817	.81	.25	3
6818	.81	.19	4
681812	.88	.25	4
6819	.94	.25	4
681912	.81	.5	4
6820	1.19	.5	4
PSC2050519	1.06	.25	4
PSC2050534	.94	.25	3
PSC2050828	.69	.25	4
PSC2050838	.69	.25	3.75

CHANCE ®		HUBBELL ® POWER SYSTEMS, INC.		HUBBELL POWER SYSTEMS, INC.	
CONFIDENTIAL: THIS DRAWING AND ITS CONTENTS ARE CONFIDENTIAL AND THE EXCLUSIVE PROPERTY OF HUBBELL POWER SYSTEMS. NO PUBLICATION, DISTRIBUTION, OR COPIES MAY BE MADE WITHOUT THE WRITTEN CONSENT OF HUBBELL POWER SYSTEMS. HUBBELL POWER SYSTEMS UNPUBLISHED ALL RIGHTS RESERVED UNDER THE COPYRIGHT LAWS.		TITLE SQUARE WASHER			
SIZE B	CAT / PART / ASSY NO. SEE TABLE	DWG NO. SA6811	REV B		
DO NOT SCALE THIS DRAWING	DRN BY TOLIVER	DATE 3/23/20	SHEET 1 OF 1		